

S·CAB

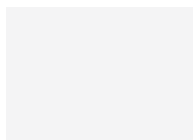
| | |
|-----------|---------------------------------|
| AA | Anodised aluminium |
| AL | Polished aluminium |
| AV | Coated aluminium |
| BV | Vintage bronze finish |
| CR | Chromed |
| IL | Polished stainless steel |
| IS | Satin stainless steel |
| KE | Corten effect |
| NB | Nickel matt finish |
| NL | Black nickel glossy finish |
| NO | Black nickel matt finish |
| OS | Brass stain finish |
| OM | Gold matt finish |
| SP | Special coating |
| VA | Anthracite coated |
| VB | White coated |
| VD | Olive green coated |
| VE | Terracotta coated |
| VF | Graphite coated |
| VH | Caramel coated |
| VK | Mocha coated |
| VL | Linen coated |
| VM | Brick red coated |
| VN | Black coated |
| VO | Air-force blue coated |
| VR | Bronze coated |
| VS | Sage green coated |
| VT | Dove grey coated |
| VV | Willow green coated |
| VY | Mustard yellow coated |
| VZ | Light blue coated |
| ZA | Zinc and anthracite coated |
| ZB | Zinc and white coated |
| ZE | Zinc and terracotta coated |
| ZL | Zinc and linen coated |
| ZN | Zinc and black coated |
| ZO | Zinc and air-force blue coated |
| ZP | Zinc and antique pink coated |
| ZT | Zinc and dove grey coated |
| ZV | Zinc and olive green coated |
| ZY | Zinc and mustard yellow coated |
| FA | Matt Aquamarine lacquered beech |
| FB | Black stained beech |
| FG | Matt Grey lacquered beech |
| FK | Smoke beech |
| FN | Natural beech |
| FS | Bleached beech |
| FW | Wenge beech |

| | |
|--------------|---|
| HB | Black stained ash with visible grains |
| HN | Blond stained ash |
| HS | Bleached ash |
| HW | White stained ash |
| MS | Sapelli mahogany |
| NC | Canaletto walnut |
| NR | Black stained oak |
| RN | Natural oak |
| HPL | Compact laminate |
| TP | Technopolymer |
| CC | With linking device |
| FX | Fixed foot |
| OF | Office version |
| RG | Adjustable foot |
| A0 | Fabric details for upholstered items see page 191 |
| A2 | Fabric details for upholstered items see page 191 |
| A6 | Fabric details for upholstered items see page 190 |
| A7/A8 | Fabric details for upholstered items see page 191 |
| A9 | Fabric details for upholstered items see page 191 |
| CN | Fabric details for upholstered items see page 184 |
| EP | Fabric details for upholstered items see page 184 |
| K | Fabric details for upholstered items see page 185 |
| L | Fabric details for upholstered items see page 185 |
| M | Fabric details for upholstered items see page 185 |
| S8 | Fabric details for upholstered items see page 189 |
| T | Fabric details for upholstered items see page 186 |
| T4 | Fabric details for upholstered items see page 187 |
| TC | Com - customer own material |
| TD | Fabric details for upholstered items see page 190 |
| TG | Fabric details for upholstered items see page 186 |
| V3 | Fabric details for upholstered items see page 183 |
| V4 | Fabric details for upholstered items see page 183 |
| V5 | Fabric details for upholstered items see page 183 |
| WF | Fabric details for upholstered items see page 184 |
| WJ | Fabric details for upholstered items see page 186 |
| WP | Fabric details for upholstered items see page 190 |
| N... | Nautical rope for Lisa Filò |
| P... | Woven extruded PVC for Lisa Club |
| IG | Products labelled IG are CATAS tested fire-retardant products according to UNI 9177 standard, supplied with the standard fire type-approval certification issued by the Ministry of Interior. |
| 1/IM | Products 1/IM tested are upholstered models tested by CATAS and fire rated according to UNI 9177 Norm, confirmed by Regular Certification issued by the Ministry of Domestic Affairs |

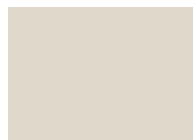
Technopolymer



10
white



11
linen



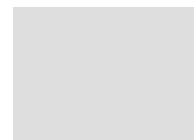
15
dove grey



81
anthracite



86
graphite



82
light grey



30
orange



40
red



42
geranium red



20
yellow



22
mustard yellow



51
light green



56
olive green



62
light blue



63
air-force blue



60
blue



73
terracotta



72
cocoa



70
bronze



80
black



222
white - dove grey



211
white - orange



212
white - red



221
white - light green



213
white - cornflower blue



214
white - anthracite

Polycarbonate



100
transparent



315
glossy dove grey



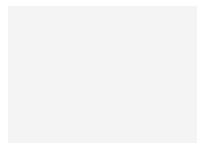
310
glossy white



183
transparent smoked

Post consumer industrial technopolymer

go
green



11
linen



15
dove grey



17
caramel



81
anthracite



22
mustard yellow



56
olive green



58
sage green



63
air-force blue

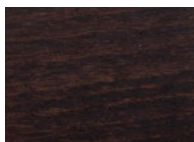
Wood



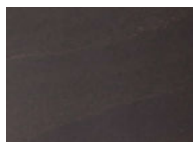
FN - 500
natural beech



FS - 501
bleached beech



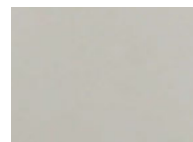
FW - 502
wenge stained beech



FK - 503
smoke beech



FB
black stained beech



FG - 504
matt grey lacquered beech



FA
matt aquamarine
lacquered beech



HS
bleached ash



HW
white stained ash



HN
blond stained ash



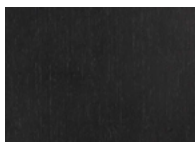
HB
black stained ash
with visible grains



IROKO



RN
natural oak



NR
black stained oak



NC
Canaletto walnut



MS
Sapelli mahogany

Steel



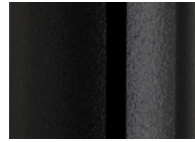
OS
satin brass
finish steel



OM
matt gold finish
steel



BV
vintage bronze
finish steel



NL
glossy black
nickel finish
steel



NO
matt black nickel
finish steel



NB
matt nickel finish
steel



KE
corten effect
steel



CR
chromed
steel

Stainless steel



IS
satin stainless
steel



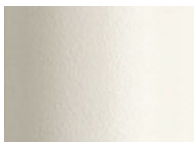
IL
polished stainless
steel

Coated steel

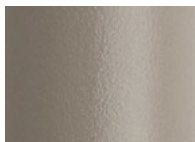


VB
matt white coated
steel smooth
finish

Coated steel, embossed finish



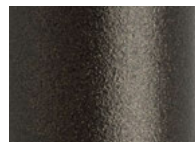
VL
matt linen



VT
matt dove grey



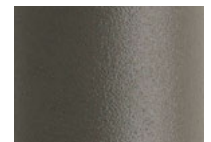
VH
matt caramel



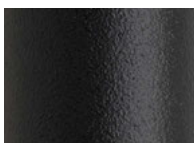
VR
matt bronze



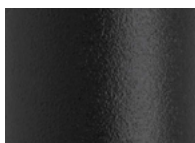
VK
matt mocha



VF
matt graphite



VA
matt anthracite
grey



VN
matt black



VY
matt mustard
yellow



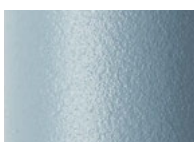
VE
matt terracotta



VD
matt olive green



VS
matt sage green



VO
matt air-force
blue

Aluminium



AA
anodised



AL
polished



AV 10
matt white coated,
embossed finish



AV 15
matt dove grey coated,
embossed finish



AV 70
matt bronze coated,
embossed finish



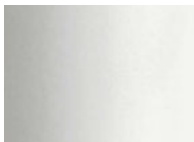
AV 81
matt anthracite
grey coated,
embossed finish



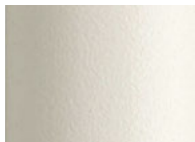
AV 84
silver coated,
polished finish

Zinc and matt coated steel, embossed finish

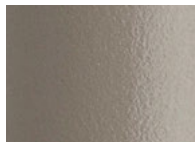
Indoor/Outdoor



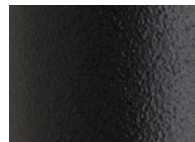
ZB
white



ZL
linen



ZT
dove grey



ZA
anthracite



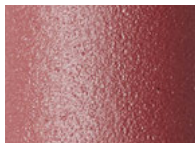
ZY
mustard yellow



ZE
terracotta



ZO
air-force blue



ZP
antique pink



ZV
olive green



ZN
black

Zinc and matt coated steel, embossed finish

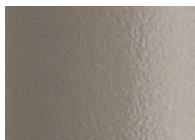
Indoor/Outdoor



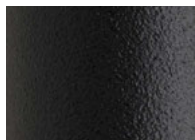
For Summer and Leo finishes



VB
white



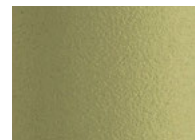
VT
dove grey



VA
anthracite



VM
brick red



VV
willow green



VZ
light blue

Marble

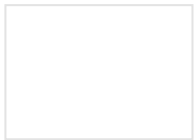


451
Calacatta

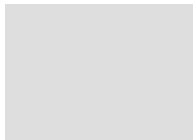


452
Sahara Noir

Compact laminate



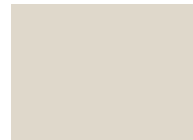
10
white



82
light grey



81
anthracite



15
dove grey



92
dove-grey spatula effect



93
piacentina stone effect



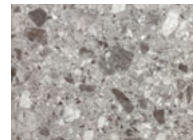
87
concrete effect



94
slate effect



90
stone effect



91
grit effect



570
dove grey oak



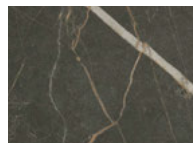
571
beaver oak



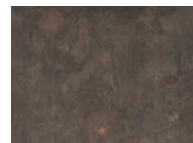
572
Carrara marble effect



574
black marble effect



575
black Sahara marble effect



573
corten effect



95 FENIX
black FENIX opaque surface, anti-fingerprint and soft touch

Galvanized and powder coated steel



ZB
white



ZT
dove grey



ZA
anthracite



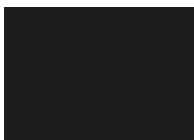
ZE
terracotta



ZO
air-force blue

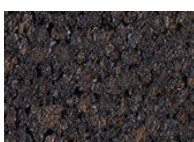


ZV
olive green



ZN
black

Black cork for Dress_Code



SN
black

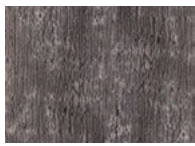
Printed colours may be different than real ones because of printing or photographic technical reasons.

Chenille

Water repellent



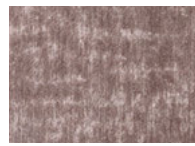
V5 D7



V5 D8



V5 A7



V5 A6



V5 A8



V5 A9



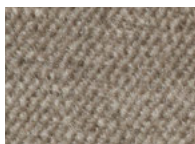
V5 B0

Velvet

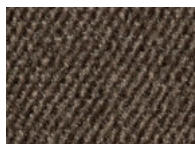
Water repellent



V4 45



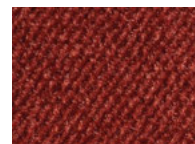
V4 40



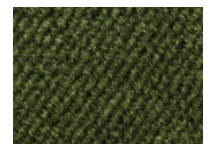
V4 44



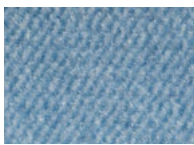
V4 46



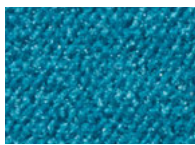
V4 39



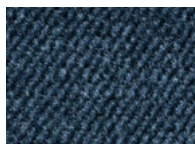
V4 38



V4 47



V4 50



V4 48



V4 49

Velvet

Fire retardant



I 1IM - UNI 9175

F NF - P 92 503 - M1

I Classe 1 - UNI 9177

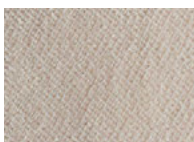
D DIN 4102 - B1

EN EN 1021:14 Part.1/2

USA California TB 117:2013

GB BS 5852:06 crib 5

EN IMO MED - Ftp 307 Part.8



V3 60



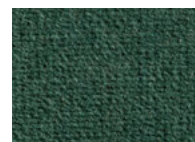
V3 59



V3 62



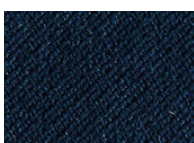
V3 58



V3 57



V3 64



V3 63



V3 66

Simil-leather

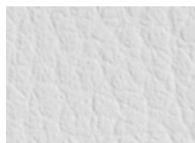
Fire retardant



I Classe 1.IM (UNI 9175)

EN EN 1021/1

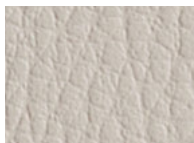
EN EN 1021/2



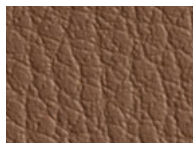
EP 74



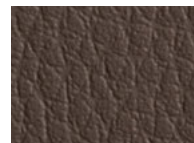
EP E0



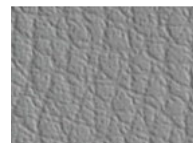
EP 70



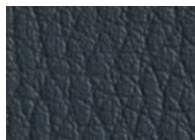
EP 68



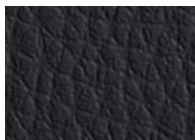
EP 73



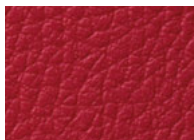
EP 69



EP 71



EP 75



EP 72



EP E1

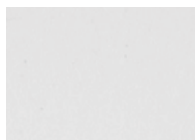
Natural leather

Fire retardant

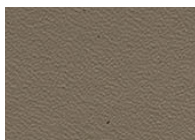


Available on request

I Classe 1.IM



CN 83



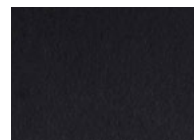
CN A2



CN A1



CN 82



CN 84

Wool

Fire retardant



Available on request

I Classe 1 IM con schiuma standard ignifuga con densità 25 Kg/cu.m.

EN EN 1021 Part. 1-2 using a standard foam 20/22 Kg/cu.m.



WF 98



WF 95



WF 97



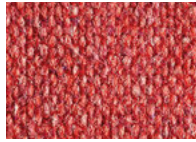
WF 96

Fabric **camira**

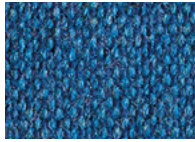
Fire retardant



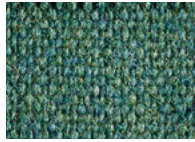
- I** UNI 9175 Classe 1 IM
- EN** 1021 - 1 (cigarette)
- EN** 1021 - 2 (match)
- GB** BS 7176 Low Hazard
- GB** BS 5852 Ignition Source 5
- GB** BS 7176 Medium Hazard
- F** NF D 60 - 013
- A** ÖNORM B 3825 & A 3800-1 (58kg/m³ CMHR Foam)
- GB** BS 5867 - 2:Type B Curtains & Drapes



K1 90



K1 99



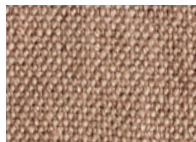
K1 00



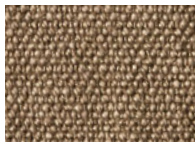
K1 F1

Linen

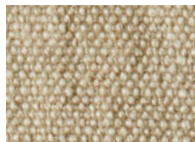
Certified and CAM compliant



L1 D4



L1 D5



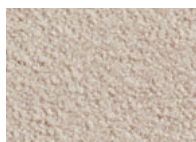
L1 D6

Fabric

Fire retardant



USA Cal. Tech. Bulletin 117, Section E, Part. 1 (CALIFORNIA TEST)



M1 19



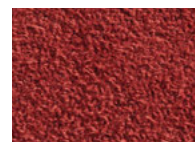
M1 18



M1 17



M1 05



M1 16



M1 20

Customer Own Material

Minimum 20 pcs. Fabric to be approved



Wool

Fire retardant



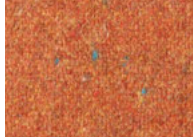
- I** Class 1 IM using a standard FR polyurethane foam 25 kg/cu.m density
- EN** EN 1021 Part 1-2 using a CM Foam 30-33 Kg/cu.m.
- USA** Calif.Bull.117 June 2013



Fabric made up of 50% recycled fibers.



WJ F8



WJ F9



WJ G0



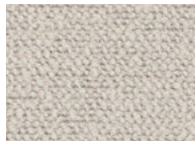
WJ G1

Fabric

Fire retardant



- I** 11M - UNI 9175
- D** DIN 4102 - B1
- I** Classe 1 - UNI 9177
- USA** NFPA 260 Class 1
- EN** EN 1021 part 1/2
- USA** California TB 117:2013
- F** NF D-60 013 (AM18)
- A** ÖNORM B 3825 - normal brennbar



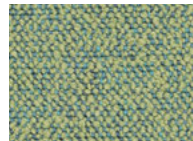
TG F2



TG F3



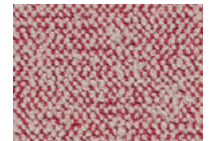
TG F4



TG F5



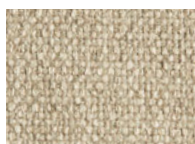
TG F6



TG F7

Fabric

Water repellent



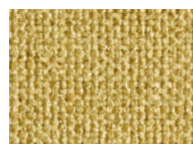
T9 E2



T9 E3



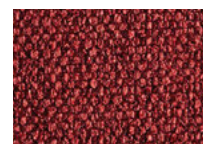
T9 79



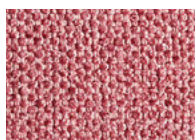
T9 E4



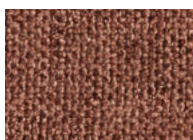
T9 E5



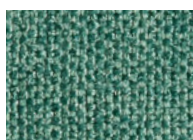
T9 78



T9 85



T9 E6



T9 E7

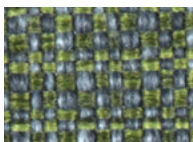


T9 80



T9 E8

Fabric



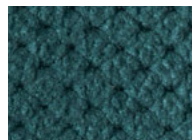
T5 26



T5 27

Fabric

Water repellent



M2 09

Fabric

Fire retardant



UNI 9175 (CL 1.IM)

UNI 8456 (CL 1)

UNI EN 1021 1-2

BS5852 1-2

I Classe 1

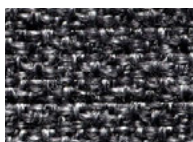
USA Calif. Bull. 117 June 2013

GB BS 5852 Crib N.5 using a CM Foam 35 kg/cu.m.

EN EN 1021 Part. 1-2 using a CM Foam 35 Kg/cu.m. Oeko-Tex Standard 100



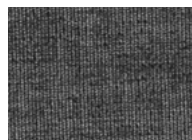
T6 28



T3 25

Fabric

Stain resistant



T8 07



T8 08

Fabric

Fire retardant



I Classe 1

D B1 DIN 4102

F M1

GB BS 5852 Crib 5 using a CM Foam 35 Kg/cu.m.

A Q1 (OENORM 3800 Part 1)

A B1 (OENORM B3825)

EN EN 1021 Part. 1-2 using a CM Foam 35 Kg/cu.m.

EN EN 13773 Burning Behaviour: class 1

EN EN 13501 - 1esp. 1,2 : B-s1, d0

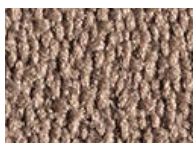
USA Calif. Bull. 117 June 2013

EN EN ISO 6940/6941

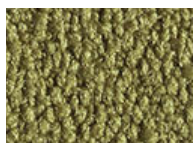
CH Fire Protection Classification: 5.3



T4 51



T4 A3



T4 53



T4 A4



T4 A5



T4 D9



T4 56



T4 55

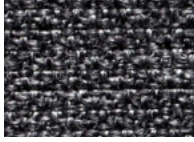
Fabric

Fire retardant



for Igloo Chair cushions (Art. 1500) and for Miss B fixed cushions

- I** Classe 1
- USA** Calif. Bull. 117 June 2013
- GB** BS 5852 Crib N.5 using a CM Foam 35 Kg/cu.m.
- EN** EN 1021 Part. 1-2 using a CM Foam 35 Kg/cu.m. Oeko - Tex Standard 100



25

Panama cotton

for Igloo Chair cushions (Art. 1500)



21

Fabric

Stain resistant



for Miss B fixed cushions



07

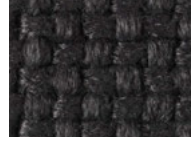
Fabric

Fire retardant



for Miss B cushions (Art. 1504) and for Miss B fixed cushions

- I** C1 (UNI 9174 - UNI 8456)
- EN** 1021/1-2 cigarette 2 match
- D** B1 (DIN 4102)
- EN** BS 7176 NH (Medium Hazard)
- F** M1 (NF P 92501-7)
- EN** NF D 60013 (AM18)
- GB** CRIB 5 (BS 5852 part II)



32

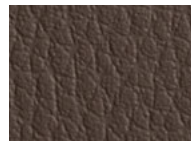
Simil-leather

Fire retardant



for Miss B fixed cushions

- I** Classe 1. IM UNI 9175
- EN** EN 1021/1
- EN** EN 1021/2



73

OUTDOOR FABRICS

Acrylic 

Outdoor use / Water repellent / Stain resistant
Mold resistant / UV resistant / Breathable / Fire retardant

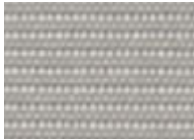


USA California Technical Bulletin 117-203 Sezione 1

USA NFPA 260 Classe 1

EN NF EN 1021-1

GB BS 5852 Part 1 Source 0



S1 B5



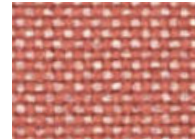
S1 B6



S1 B8



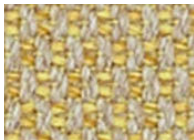
S1 B7



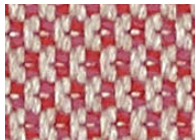
S2 B9



S3 C0



S4 C1



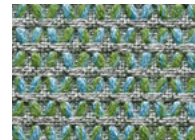
S4 C2



S4 C3



S5 C4



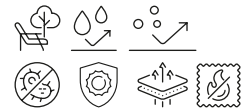
S7 C6



S6 C5

Acrylic 

Outdoor use / Water repellent / Stain resistant
Mold resistant / UV resistant / Breathable / Fire retardant



Fabric with 50% recycled Sunbrella® acrylic

USA California Technical Bulletin 117-203 Sezione 1

USA NFPA 260 Classe 1

EN NF EN 1021-1

GB BS 5852 Part 1 Source 0



S8 G6



S8 G7



S8 G8



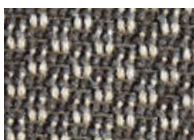
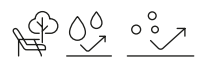
S8 G9



S8 H0

Acrylic

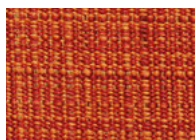
Outdoor use / Water repellent / Stain resistant



A3 C7



A3 C8



A4 C9



A5 D0

Fabric

Outdoor use / Fire retardant



GB BS 5852: 1979 source 0 (cigarette test)

EN EN 1021-1 (cigarette test)

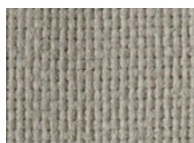
USA CAL TB-117 & NFPA 260



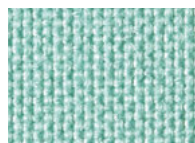
Organic fabric for outdoor use,
made of recycled polypropylene.



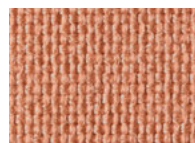
TD G2



TD G3



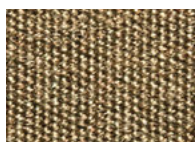
TD G4



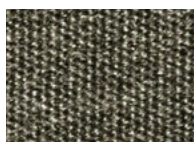
TD G5

Acrylic

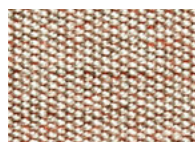
Outdoor use / Water repellent / Stain resistant



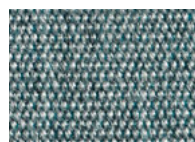
A6 D1



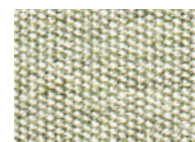
A6 D2



A6 D3



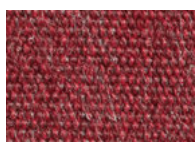
A6 86



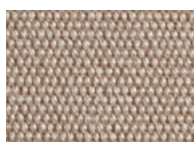
A6 89

Acrylic

Outdoor use / Waterproof



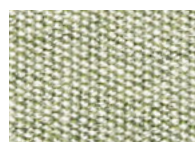
WP 87



WP 88



WP 86



WP 89

Acrylic (agora)

Outdoor use / Water repellent / Stain resistant
Mold resistant / UV resistant / Breathable

Fabric with both recycled and virgin fibers.



A7 H1



A7 H2



A8 H4



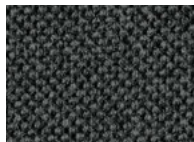
A8 H3

Acrylic (agora)

Outdoor use / Water repellent / Stain resistant
Mold resistant / UV resistant / Breathable



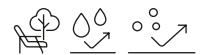
A9 H6



A9 H5

Acrylic Dralon® Acrisol®

Outdoor use / Water repellent / Stain resistant



A2 H7



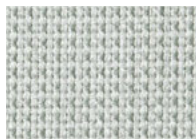
A2 H9



A2 I0

Acrylic Dralon® Acrisol®

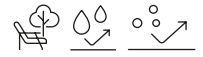
Outdoor use / Water repellent / Stain resistant



A0 H8

Acrylic Dralon®

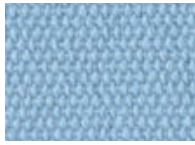
Outdoor use / Water repellent / Stain resistant



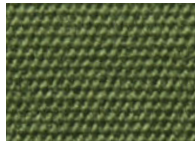
for Si-Si, Si-Si Barcode, Si-Si Dots cushions



B1



B2



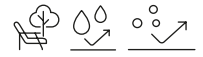
B3



B4

Acrylic

Outdoor use / Water repellent / Stain resistant



for Summer chair and armchair cushions (Art. 1495)

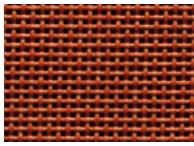


10

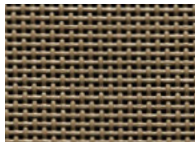
SYNTHETIC MATERIALS

Synthetic Fabric Serge Ferrari group

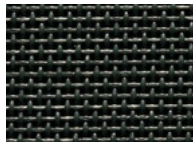
Outdoor use / Breathable / Water repellent



T73
terracotta



T75
mud



T96
slate

Synthetic Fabric

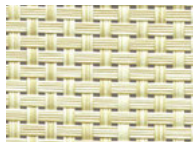
Outdoor use / Breathable / Water repellent



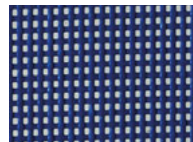
T10
white



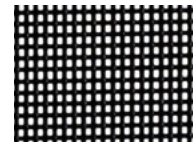
T15
dove grey



T16
honey



T60
blue



T81
anthracite

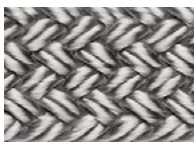
Nautical rope

Outdoor use



for Lisa Filò weaving

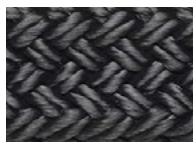
100% recyclable polyester, dope-dyed, non-toxic, resistant and easy to maintain.



N84
silver



N81
anthracite



N80
black



N15
dove grey



N30
orange



N57
mint

Extruded pvc reinforced with nylon wires

Outdoor use



for Lisa Club weaving



P10
white



P86
graphite



P74
biscuit



P73
terracotta